

MOUNTING INSTRUCTIONS



2D - LIFTING SYSTEMS | **RBFM RECESS FORMER**

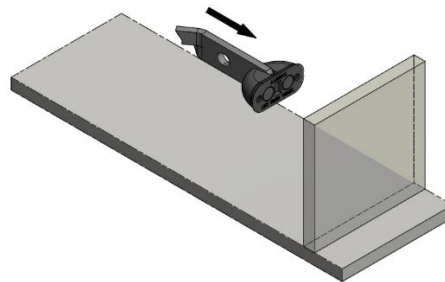


RECESS FORMER “RBFM”

The recess former with magnets RBFM is made of rubber. It is used to create cavities in concrete round the anchor head. The recess formers are available for load range 25 kN - 100 kN

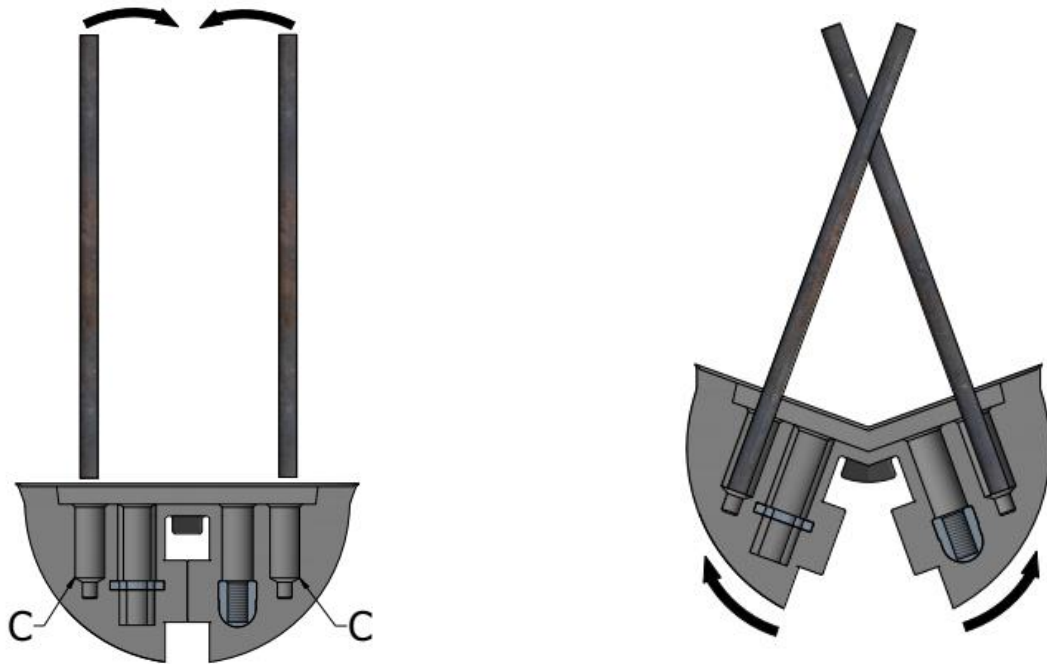


TYPE	Product number	Load group [kN]	Dimensions		
			“a”	“b”	“c”
			[mm]	[mm]	[mm]
RBFM -025	62154	7 – 25	43	104	45
RBFM -050	63083	30 – 50	49	126	59
RBFM -100	63084	75 – 100	67	188	85



The RBFM magnetic recess former is used in applications where drilling holes in the steel formwork is undesirable.

Removal of RBF



To remove the recess former, insert two rods in holes **C** and move towards each other. Do not use a hammer to remove the recess former as that may destroy the former.

CONTACT



TERWA is the global supplier for precast and construction solutions with multiple offices around the world. With all our staff, partners and agents, we are happy to provide all construction and precast companies who work in the building industry with full service and 100% support.

TERWA CONSTRUCTION GROUP

Terwa Construction Netherlands (HQ)

Global Sales & Distribution
 Kamerlingh Onneslaan 1-3
 3401 MZ IJsselstein
 The Netherlands
T +31-(0)30 699 13 29
F +31-(0)30 220 10 77
E info@terwa.com

Terwa Construction Central East Europe

Sales & Distribution
 Strada Sânzieni
 507075 Ghimbav
 Romania
T +40 372 611 576
E info@terwa.com

Terwa Construction Poland

Sales & Distribution
 Ul. Cicha 5 lok. 4
 00-353 Warszawa
 Poland
E info@terwa.com

Terwa Construction India & Middle East

Sales & Distribution
 India
T +91 89 687 000 41
E info@terwa.com

Terwa Construction China

Sales & distribution
 5F 504, No. 101 Chuanchang road
 PRC, 200032, Shanghai
 China
E info@terwa.com

ALL SPECIFICATIONS CAN BE CHANGED WITHOUT PREVIOUS NOTICE.

DISCLAIMER

Terwa B.V. is not liable for deviations due to wear of the products it has delivered. Neither is Terwa B.V. liable for damage due to inaccurate and/or improper handling and use of the products it has delivered and/or use of same for purposes other than those intended.

Terwa B.V.'s responsibility is furthermore limited in accordance with article 13 of the "Metaalunie" conditions, which are applicable for all Terwa B.V. deliveries. The user is responsible for ensuring compliance with all applicable copyright laws. Without limiting the rights under copyright, no part of this documentation may be reproduced, stored in or introduced into a retrieval system, or transmitted in any form or by any means (electronic, mechanical, photocopying, recording, or otherwise), or for any purpose, without the express written permission of Terwa B.V.